

CRUSHMASTER C600E

TECHNICAL SPECIFICATION

Subject to change without notice.





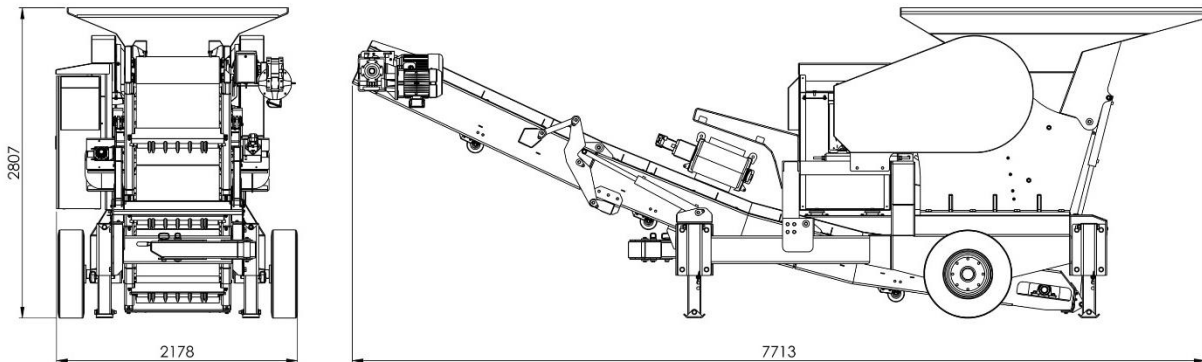
DESCRIPTION:

The single toggle jaw crusher is designed to impart on a rock particle placed between a fixed and moving jaw plate. The moving jaw plate applies the force of impact on particles held against the fix jaw plate. Both the jaw plates are bolted on to heavy block. The moving jaw plate is pivoted at the top end and connected to an eccentric shaft. The retrieving action of the jaw plate travel is carried out via a spring pulling system.

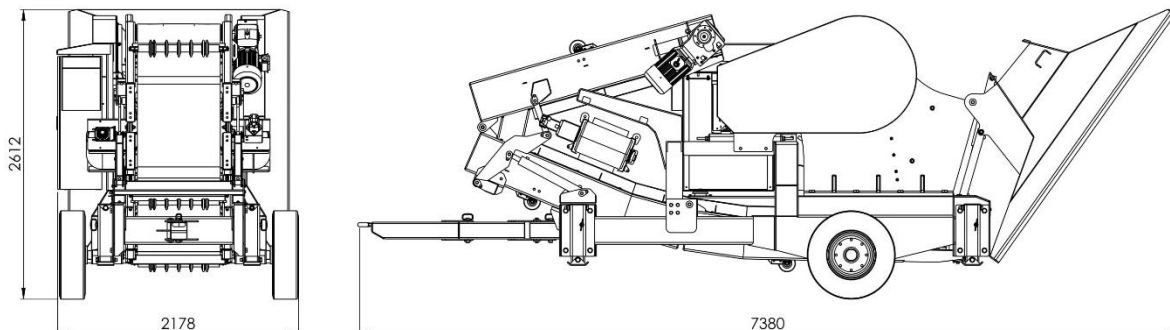
DIMENSIONS AND WEIGHT:

- Length – Transport: - 7.38m (24'6")
- Length – Working: - 7.713m (25'4")
- Width – Transport: - 2.178m (7'2")
- Width – Working: - 2.178m (7'2")
- Height – Transport: - 2.612m (8'7")
- Height – Working: - 2.807m (25'4")
- Weight: - 10,500 Kg (23,149 lbs)

Working:



Transport:





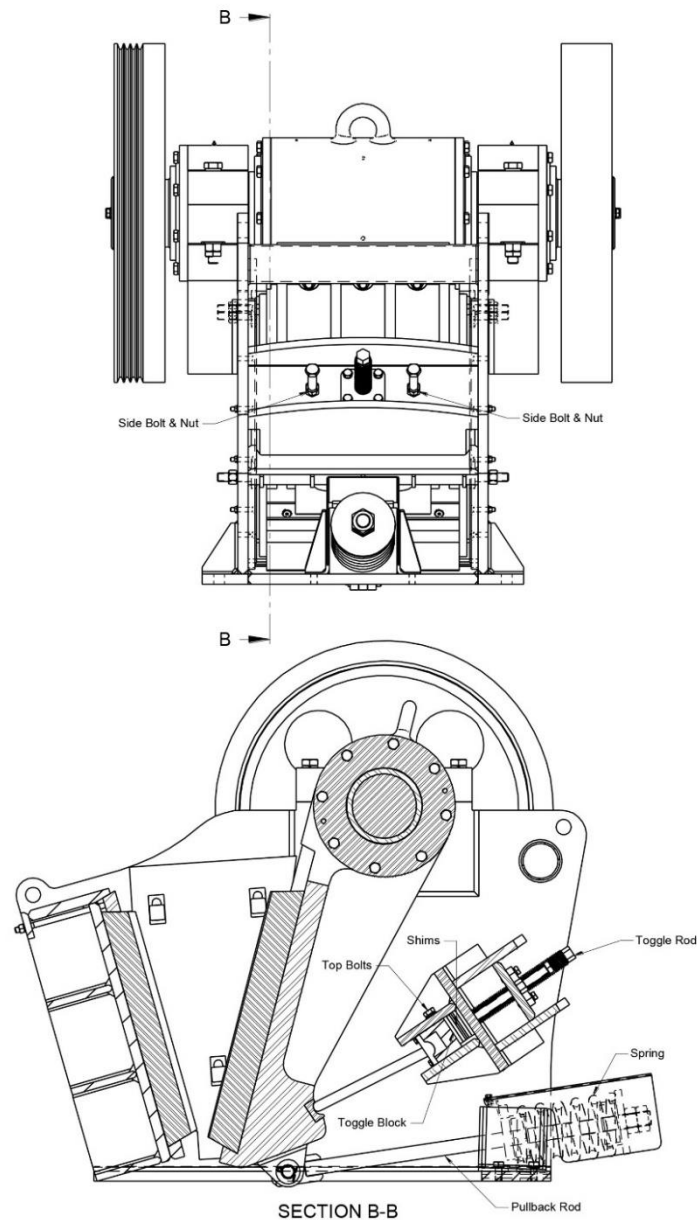
HOPPER:

- Hopper Length: - 2.75m (9')
- Hopper Width: - 2m (6'7")
- Hopper Capacity: - 2.9m³ (3.8yd³)
- Spec: - AR400 10mm thick Mild Steel Plate
- Folding: - Hydraulic ram folding and locking pin
- Folding/Tipping: - by hydraulic rams, facilitating emptying in the event of blockage

CRUSHER:

600x400mm Single Toggle Jaw Crusher

- Capacity: - 30 – 70 tph
- Max. Feed Size: - 350mm
- Closed Side Setting: - 30 – 80mm
- Crushers Speed: - 300rpm
- Power Rating: - 37.5kW





PRODUCT CONVEYOR:

- Single Electric Gearmotor: - Nord 5.5kW
- Discharge Height: - 2230mm (7'4")
- Belt Width: - 750mm (30")
- Belt Spec: - Plain EP500/2 5+1.5
- Drive Drum Diameter: - 227mm (9")
- Tail Drum Diameter: - 212mm (8")
- Belt Speed:
- Hyrdaulic folding for Transport: - YES

CONTROL PANEL ENCLOSURE:

HYDRAULIC POWERPACK:

- 5,5 kW electric motor
- 30 L oil tank capacity
- 4- bank function control valve
- Load-holding valves where necessary

ELECTRICS:

SAFETY FEATURES:

- Fully skirted discharge conveyor
- Emergency stop switches
- Anti-blockage technology

OPTIONS: